

# Guidance from Regional Immigration Bureau Staff

(in Peace Memorial Park)

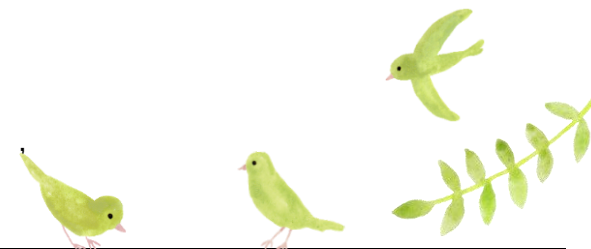
On the 2<sup>nd</sup> Friday of every month, from 1:30 pm to 4:00 pm, Regional Immigration Bureau staff come to the Hiroshima City & Aki County International Resident Consultation Service to answer questions about residency status.

## Where:

### Hiroshima City & Aki County International Resident Consultation Service

ひろしまし あきぐん がいこくじんそうだんまどぐち  
(広島市・安芸郡 外国人相談窓口) TEL: 082-241-5010

■ The Consultation Service is located in the International Conference Center Hiroshima (ひろしまこくさいかいぎじょう 広島国際会議場) in Peace Memorial Park. **Address:** 1-5 Nakajima-cho, Naka-ku, Hiroshima City



When?	How to apply / Help with language																										
<p style="text-align: center;"><b>2<sup>nd</sup> Friday of every month</b> From 1:30 pm to 4:00 pm</p> <table border="1" data-bbox="206 938 734 1455"><thead><tr><th colspan="2" data-bbox="206 938 734 991">Guidance Days</th></tr></thead><tbody><tr><td data-bbox="206 991 470 1038"><b>2024</b></td><td data-bbox="470 991 734 1038"><b>2025</b></td></tr><tr><td data-bbox="206 1038 470 1086">April 12</td><td data-bbox="470 1038 734 1086">January 10</td></tr><tr><td data-bbox="206 1086 470 1134">May 10</td><td data-bbox="470 1086 734 1134">February 14</td></tr><tr><td data-bbox="206 1134 470 1182">June 14</td><td data-bbox="470 1134 734 1182">March 14</td></tr><tr><td data-bbox="206 1182 470 1230">July 12</td><td></td></tr><tr><td data-bbox="206 1230 470 1278">August 9</td><td></td></tr><tr><td data-bbox="206 1278 470 1326">September 13</td><td></td></tr><tr><td data-bbox="206 1326 470 1374">October 11</td><td></td></tr><tr><td data-bbox="206 1374 470 1422">November 8</td><td></td></tr><tr><td data-bbox="206 1422 470 1468">December 13</td><td></td></tr></tbody></table> <p>★ <b>Guidance is available for 30 min. per person.</b></p> <table border="1" data-bbox="537 1278 869 1437"><tbody><tr><td>① 1:30 pm-2:00 pm</td></tr><tr><td>② 2:10 pm-2:40 pm</td></tr><tr><td>③ 2:50 pm-3:20 pm</td></tr><tr><td>④ 3:30 pm-4:00 pm</td></tr></tbody></table>	Guidance Days		<b>2024</b>	<b>2025</b>	April 12	January 10	May 10	February 14	June 14	March 14	July 12		August 9		September 13		October 11		November 8		December 13		① 1:30 pm-2:00 pm	② 2:10 pm-2:40 pm	③ 2:50 pm-3:20 pm	④ 3:30 pm-4:00 pm	<p>Please call the Hiroshima City &amp; Aki County International Resident Consultation Service (TEL: 082-241-5010) no later than the day before the day you want to get guidance.</p> <p>If you need someone who can speak Japanese and your own language, please let us know when you apply.</p> <p><b><u>Hiroshima City &amp; Aki County International Resident Consultation Service</u></b></p> <p><b>Open:</b> 9:00 am to 4:00 pm on weekdays (Monday to Friday) <b>Closed:</b> Saturdays, Sundays, December 29 through January 3, August 6 and on Japanese national holidays.</p>
Guidance Days																											
<b>2024</b>	<b>2025</b>																										
April 12	January 10																										
May 10	February 14																										
June 14	March 14																										
July 12																											
August 9																											
September 13																											
October 11																											
November 8																											
December 13																											
① 1:30 pm-2:00 pm																											
② 2:10 pm-2:40 pm																											
③ 2:50 pm-3:20 pm																											
④ 3:30 pm-4:00 pm																											